

**Floppy-disk interface for the Junior**

(December 1982, page 12-48)

Figure 3 contains an error (see page 12-50). Pin 7 of the lower IC should not be cut but be connected to ground.

**Upper and lower case on the Elekterminal**

(January 1983, page 1-56)

Figure 1 (page 1-57) fails to show that the  $\overline{CE}$  of the 2716 which replaces IC11 must be connected to ground. If this is not done, the EPROM remains in the three-state mode.

**Drum interface**

(November 1982, page 11-20)

The connections to pins 6 and 7 of IC2 (see figure 2) must be interchanged: the junction R9-C4 must be connected to pin 7 and the other side of C4 to pin 6.

If for each drumbeat a number of trigger pulses are generated, connect a 50 k preset in series with R8.

**In-car ionizer**

(December 1982, page 12-45)

The value of P1 is given as 47 k in the parts list; its correct value is 10 k as shown in figure 1.

**Single-channel infra-red remote control**

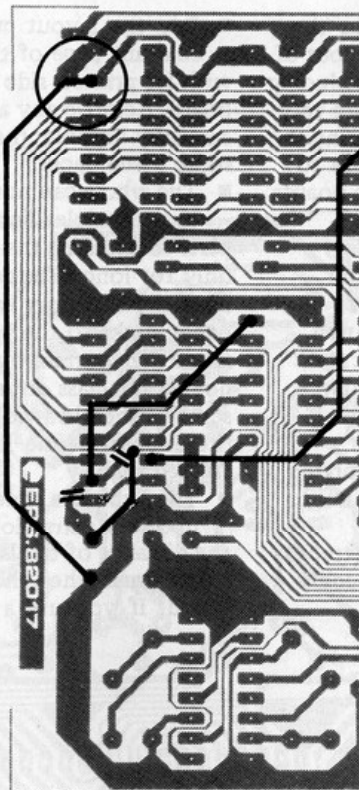
(January 1982, page 1-52)

In figure 2 on page 1-52, FF1 is shown as a flip-flop, whereas it should be a monostable. This can be corrected by connecting pin 11 of IC2 to ground.

**Music quantizer**

(October 1983, page 10-33)

The type numbers of IC4 and IC7 in figures 4 and 5 respectively have been interchanged: IC4 = 74LS377 and IC7 = 74LS373. The parts list is correct.

**64 k on the 16 k dynamic RAM card**  
(September 1983, page 9-31)

A drawing error has crept into figure 3 on page 9-31: the new connection to be made at the bottom left-hand of the pcb should be as indicated in the circled area.

**Crescendo**

(December 1982, page 12-32)

The circuit diagram on page 12-32 contains an error: the voltage at the cathode of D3 should be +0.7 V and that at the anode of D4, -0.7 V.